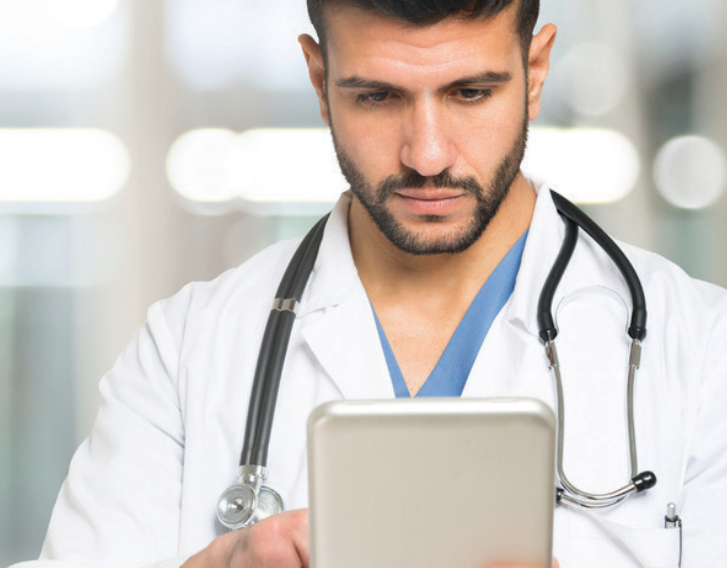


Save Time

with the
Provider Portal



Log in to my.FirstCare.com Self-Service to increase your office's efficiency. It saves you time that you would otherwise spend on the phone and helps us serve you better.

How It Works

my.FirstCare.com Self-Service is your one-stop shop for most information and questions, and is accessible from your smartphone, tablet or desktop computer.

Simply log in or create an account to enjoy 24/7 access to robust functionality, fast page loads, and intuitive navigation—all within a mobile-friendly and secure online environment.

my.FirstCare.com Self-Service Features

Mobile Friendly	24/7 Account Access	Secure	Intuitive Navigation	Robust Functionality
Detailed Member Information	Document Search	Authorization Search	Enhanced Authorization Request	Reports
Message Center	Claims Search	Detailed Account Information	Interactive Dashboards	Member ID Cards

Need assistance setting up a **my.Firstcare.com Self-Service** provider portal account? Please contact your FirstCare Provider Relations Representative by emailing your request to prsupport@bswhealth.org.